



# Caledonian

Railway Cables

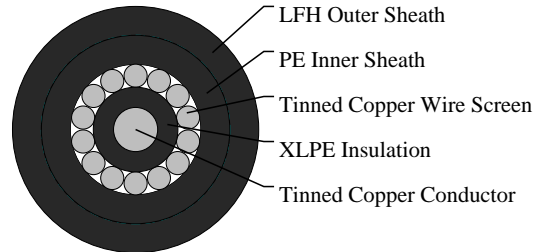
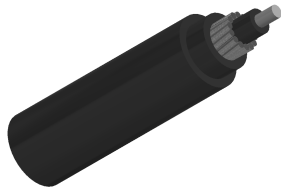
www.caledonian-cables.com

marketing@caledonian-cables.com

## Concentric Signalling Cables to SE1047

SE 1047 Type 2 Concentric Signalling LFH Sheathed Cables

RF1047-RC4Z1Z1-450/750V-1G1.85S



### APPLICATIONS

The mission critical signalling cables are used between central signalling terminations frame and vital signalling equipments.

### STANDARDS

SE1047

UNE 21031

### VOLTAGE RATING

450/750V

### CABLE CONSTRUCTION

Conductors: Solid tinned copper conductors.

Insulation: XLPE.

Screen: TCW (Tinned Copper Wire) screen.

Inner Sheath: PE.

Outer Sheath: LFH.

### PHYSICAL AND THERMAL PROPERTIES

Minimum Bending Radius: 7.5xOD

Temperature Range: -25°C to +85°C (during operation); -10°C to +70°C (during installation)

### Electrical Properties

Electrical Characteristics at 20°C:

Maximum DC Conductor Resistance: 11 Ω/km

Maximum DC Screen Resistance: 9.66 Ω/km

### DIMENSION AND PARAMETERS

No. of Cores × Cross-sectional Area	No./Nominal Diameter of Strands	Nominal Insulation Thickness	Nom. Overall Diameter	Approx. Weight
No. × mm <sup>2</sup>	no./mm	mm	mm	kg/km



# Caledonian

## Railway Cables

[www.caledonian-cables.com](http://www.caledonian-cables.com)

[marketing@caledonian-cables.com](mailto:marketing@caledonian-cables.com)

1 x 1.85	1/1.53	0.7	10.3	140
----------	--------	-----	------	-----



Fire Retardant  
NF C32-070-2.2(C1)  
IEC60332-3-24/EN50266-2-4



Flame Retardant  
NF C32-070-2.1(C2)  
IEC60332-1-2/EN50265-2-1



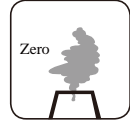
Low Corrosivity  
IEC60754-2/EN50267-2-2/3  
NF C32-074/NF C20-453



Low Smoke Emission  
IEC 61034-2 / EN 50268-2  
NF C32-073/NF C 20-902



Low Toxicity



Zero Halogen  
IEC 60754-1/EN 50267-2-1  
NF C20-454